


U.I. Lapp GmbH	PRODUCT INFORMATION	
EPIC® H-A 32 SDR-BO		07.11.2014

Rugged housings for 2 inserts
For two inserts of the small H-A, H-D and STA series. Space-saving



Industrial machinery and plant engineering



Mechanical resistance



Robust



Waterproof



Info

Compact, robust metal housings for double size H-A 32

Application range

Machine and equipment manufacturing
Control engineering

Product features

Surface-mount base
Bolts for double lever
1 cable entry
Metal cover

Remark

Photographs are not to scale and do not represent detailed images of the respective products.

Technical Data

Material:

Housing: aluminium alloy, grey
Lever: zinc-plated steel
Sealing: NBR

Protection rating:

IP 65 (latched)


Temperature range:

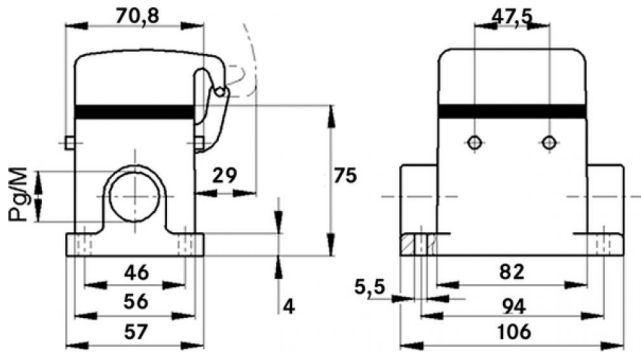
-40°C to +100°C, short-term up to +125°C

Product Management	Document: LAPP_PRO110171EN.pdf	1 / 3
--------------------	--------------------------------	-------



Part number	Article	PG	Neck	Pieces / PU
H-A housing: surface-mount base (cover, 1 cable entry, bolts for double lever)				
70515200	H-A 32 SDR-BO 21	21	yes	5
70515400	H-A 32 SDR-BO 29	29	yes	5
79515200	H-A 32 SDR-BO M25		yes	5
79515400	H-A 32 SDR-BO M32		yes	5

U.I. Lapp GmbH	PRODUCT INFORMATION	
EPIC® H-A 32 SDR-BO		07.11.2014



Product Management	Document: LAPP_PRO110171EN.pdf	3 / 3
--------------------	--------------------------------	-------